



INDUCTIVE SENSOR - M8

Sensor for high temperature
Cable output
Flush-mountable

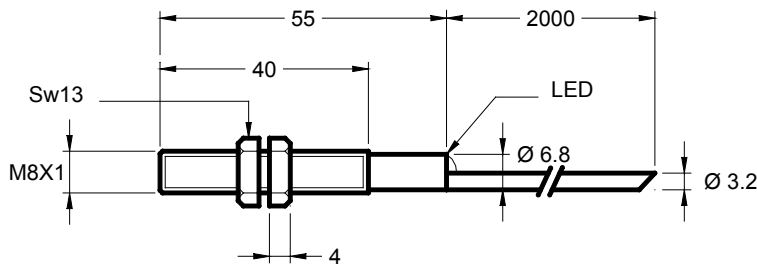
ART. NO.

SM-10-A11-S-L-100
SM-10-A11-O-L-100
SM-20-A11-S-L-100 - SM213002

DESCRIPTION

10 = PNP
20 = NPN
A11 = M8x1
S = NO
O = NC
L = led
100 = 100°C

DIMENSIONS AND TECHNICAL DATA



Operating distance S_n	1.5 mm
Flush mounting	yes
Electrical version	3 wires DC
Operating voltage U_b	10...35 Vdc
Output current I_e	max. 250mA
Voltage drop U_d	max. ≤ 3.5 V
Permitted residual ripple	max. 5%
No load current I_o	tip. 10mA
Frequency of operating cycles	max. 2 KHz
Hysteresis	< 10 %
Repeat accuracy	< 1 %
Permitted ambient temperature	-25...+100°C
Temperature drift	< 10 %
Led display	yellow
Protective circuit	built-in
Degree of protection	(IEC 529) IP 67
Housing material	INOX303
Active surface	Natural PEEK
Connection	cable 2m, TEEE/SPR, 3x0.22mm ²
Maximum torque Nm	4.5

Ed. G/02 - All specifications are subject to change without notice

