

INDUCTIVE SENSOR - Ø 6.5

**Mini special version: long distance
Plug connection**

TYPE - ART. NO.

SM-10-6.5-S-Y7-D3 - SM107008

SM-10-6.5-O-Y7-D3

SM-20-6.5-S-Y7-D3

DESCRIPTION

10 = PNP

20 = NPN

6.5 = Ø 6.5 - shielded

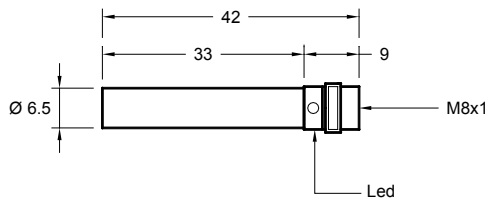
S = normally open

O = normally closed

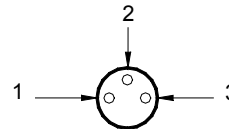
Y7 = metal connector M8x1

D3 = Sn 3mm

DIMENSIONS AND TECHNICAL DATA



Connector Y7
for sensors 6,5-M8



1= Brown = +
2= Black= PNP-NPN output
3= Blue = -

Operating distance Sn	3 mm
Flush mounting	yes, related to the housing
Electrical version	3 pins DC
Operating voltage Ub	10...35 Vdc
Output current Ie	max. 150mA
Voltage drop Ud	max. ≤ 3.5 V
Permitted residual ripple	max. 5%
No load current Io	tip. 10mA
Frequency of operating cycles	max. 1 KHz
Hysteresis	< 10 %
Repeat accuracy	< 1 %
Permitted ambient temperature	-10...+60°C
Temperature drift	< 10 %
Led display	yellow
Protective circuit	built-in
Degree of protection	(IEC 529) IP 67
Housing material	INOX 303
Active surface material	PVDF
Connection	metal connector 3 pins, M8x1
Maximum torque	-

Ed. E/12 - All specifications are subject to change without notice

