

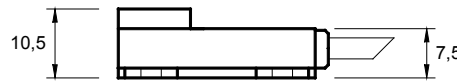
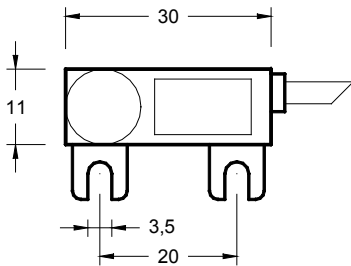
INDUCTIVE SENSOR - VR

**Rectangular housing - Long distance version
Cable output
Mounting bracket C type**

TYPE - ART. NO.
 VR-10-S-C-D8
 VR-10-O-C-D8
 VR-20-S-C-D8

DESCRIPTION
 10 = PNP
 20 = NPN
 S = normally open
 O = normally closed
 C = bracket version
 D8 = Sn 8mm

DIMENSIONS AND TECHNICAL DATA



Operating distance Sn	8 mm
Flush mounting	no
Electrical version	3 wires DC
Operating voltage Ub	10...35 Vdc
Output current max. Ie	max. 250mA
Voltage drop Ud	max. ≤ 3.5 V
Permitted residual ripple	max. 10%
No load current Io	tip. 15mA
Frequency of operating cycles	max. 500 Hz
Hysteresis	< 15 %
Repeat accuracy	< 5 %
Permitted ambient temperature	-10...+60°C
Temperature drift	< 15 %
Led display	yellow
Protective circuit	built-in
Degree of protection	(IEC 529) IP 67
Housing material	PA
Active surface	PA
Connection	cable 2m, PVC, 3x0.14mm ²
Maximum torque Nm	-

Ed. E/12 - All specifications are subject to change without notice

