

INDUCTIVE SENSOR - VR

**Rectangular housing
Cable output
Mounting bracket C type**

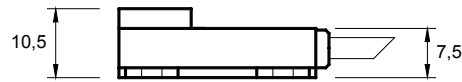
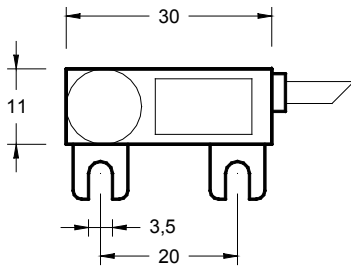
TYPE - ART. NO.

VR-10-S-C - SM105100
VR-10-O-C
VR-20-S-C - SM205031

DESCRIPTION

10 = PNP
20 = NPN
S = normally open
O = normally closed
C = bracket version

DIMENSIONS AND TECHNICAL DATA



Operating distance Sn	2 mm
Flush mounting	yes
Electrical version	3 wires DC
Operating voltage Ub	10...35 Vdc
Output current max. Ie	max. 250mA
Voltage drop Ud	max. ≤ 3.5 V
Permitted residual ripple	max. 10%
No load current Io	tip. 15mA
Frequency of operating cycles	max. 2 KHz
Hysteresis	< 10 %
Repeat accuracy	< 1 %
Permitted ambient temperature	-20...+70°C
Temperature drift	< 10 %
Led display	yellow
Protective circuit	built-in
Degree of protection	(IEC 529) IP 67
Housing material	PA
Active surface	PA
Connection	cable 2m, PVC, 3x0.14mm ²
Maximum torque Nm	-

Ed. E/12 - All specifications are subject to change without notice

